




---

---

---

---

---

---

---

---




---

---

---

---

---

---

---

---

### Housekeeping

Please make sure you:

- Silence your phone
- Turn on your camera
- Mute your microphone
- Questions in the chat

Please note this session is being recorded to include on our website

---

---

---

---

---

---

---

---

### Aims of the session

- Introduction to kinship care
- Signposting to practice tools and resources
- Introduction to relevant legislation
- Q&A




---

---

---

---

---

---

---

---

### Use of language

- Current legislation and regulations use language of "connected persons" and "family and friends carers"
- Where quoting or referencing legislation or regulations, we will use that same language
- Otherwise, CoramBAAF use "kinship care" as an umbrella term - reflects the current national conversation, is more inclusive and has more universal understanding
- Language used by professionals should have meaning for families – eg is the term "connected person" congruent with what is often a familial, loving and trusting relationship




---

---

---

---

---

---

---

---

**coramBAAF**  
adoption • fostering • kinship

### Context




---

---

---

---

---

---

---

---

## Definition



- “Kinship care is any situation in which a child is being raised in the care of a friend or family member who is not their parent. The arrangement may be temporary or longer term”

Includes:

- Informal kinship care
- SGO arrangements
- CAO arrangements
- Kinship foster care
- Private fostering where individuals are caring for a child
- Adoptive arrangements where the adopter is a family member or friend

---

---

---

---

---

---

---

---

## Kinship care – policy context



- [Championing kinship care: the national kinship care strategy \(publishing.service.gov.uk\)](https://publishing.service.gov.uk)
- “establish the foundations for a future, transformed kinship care system”
- “gather evidence and amplify the voices of kinship families to build towards a new system. A system with kinship at its heart”

---

---

---

---

---

---

---

---

## Exercise

- 3 mins – Don’t over think it and be honest with yourself
- Identify a child in your network whom you love and care about eg grandchild, niece/nephew, family friend, sibling
- Imagine they came to live with you and your partner/family tomorrow
- List down in what ways this would impact on your life
- Thinking about the child you love, why would you want them to come and live with you




---

---

---

---

---

---

---

---

### Context – social work practice

- Prevalence
- Benefits
- Unplanned and crisis driven
- Motivation
- Trust and relationship with local authority
- Unique jigsaw puzzle - Fostering Regs, SGO Schedule and current care planning




---

---

---

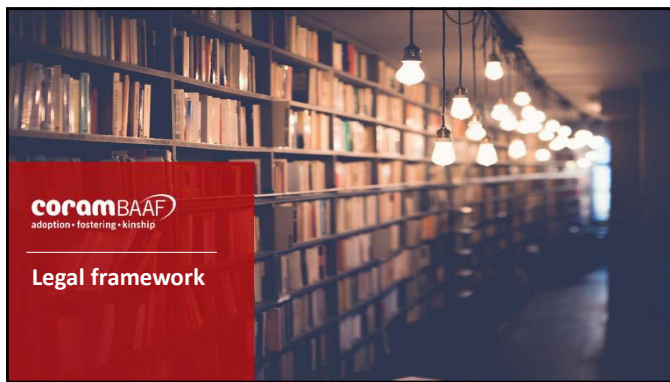
---

---

---

---

---




---

---

---

---

---

---

---

---

### Context – prioritising kinship

- Children Act 89 S22C – general principle children should be cared for by family or friends
- “give preference” to living with kinship carers
- Not a linear journey




---

---

---

---

---

---

---

---

### Types of kinship care

- Kinship foster care: [The Care Planning, Placement and Case Review \(England\) Regulations 2010 \(legislation.gov.uk\)](#)
- Special Guardianship: [The Special Guardianship Regulations 2005 \(legislation.gov.uk\)](#)
- Child Arrangements Order: [Children Act 1989](#)
- Private fostering: [Private Fostering National Minimum Standards \(publishing.service.gov.uk\)](#)
- Informal kinship care: [Children Act 1989](#)

---

---

---

---

---

---

---

---

### Quiz – kinship care or not?

- A child lives with her aunt following the death of her mother
- A social worker asks a child's grandmother to look after them and explains that they will be assessed as a foster carer
- A young person goes to stay with a family friend for a couple of weeks following an argument with their parents
- Following separation, a CAO is in place to say when a child spends time with each parent




---

---

---

---

---

---

---

---



### Raising awareness – how will I know?

- The child may talk about living with other family members and not their parents
- They may be collected from nursery or school by someone other than their parent on a regular basis
- Someone other than a parent may bring them to health appointments
- They may talk about missing parents, brothers or sisters
- They may react differently to significant festivities or celebrations
- If you're not sure, ask them who they live with

---

---

---

---

---

---

---

---




---

---

---

---

---

---


---

---

**Support needs – what does research tell us?**

- Education – Hunt (2020) children in kinship care doing at least as well as children in unrelated foster care but have higher rates of Special Educational needs than the general population
- Family time – Hunt (2020) research shows that majority of children in kinship care retain in contact with at least one parent, although this can reduce over time
- Respite – Hunt (2020) one study showed this was highest rank support need – afterschool club/holiday activities/formal respite

(Hunt J: Two Decades of UK Research on Kinship Care – an Overview 2020)




---

---

---

---

---

---

---

---

**Support needs – what does research tell us?**

- Financial support – is inconsistent and not always available. Harwin et al (2019) note that 20% of carers have significant financial difficulties
- Housing – 13% of carers noted to have housing issues (Harwin et al) mirrored by other studies
- Health – impact of caring for children on SGs own health. Harwin et al noted 20% of SG carers had health issues at point of SGO
- Legal – SGs are not routinely provided with legal consultation/support prior to SG being granted or in case of discharge application

(Hunt 2020; Harwin et al 2019)

---

---

---

---

---

---

---

---

## Support

- Needs change over time
- Support should be based on need not past or current legal status
- Importance of support planning
- Postcode lottery
- Kinship local offer
- What can your organisation offer?




---

---

---

---

---

---

---

## Any questions?




---

---

---

---

---

---

---

## Resources

[Helping families Helping children - Family Rights Group](#)

[Kinship: Home | The Kinship care charity | England and Wales](#)

[Understanding Formal Kinship Care Arrangements in England Analysis of Administrative Data \(foundations.org.uk\) 2022](#)

[Outbound Permanence Service | CoramBAAF](#)

[Championing kinship care: the national kinship care strategy \(publishing.service.gov.uk\)](#)

[Key findings from the last two decades of UK research on kinship care - Family Rights Group \(frg.org.uk\) 2020](#)

---

---

---

---

---

---

---



## CoramBAAF Events

If your organization is a member of CoramBAAF

- [Kinship Care Practice Forum | CoramBAAF](#)  
Book online
- [Private Fostering Practice Forum | CoramBAAF](#)  
Book online
- [Training & events programme | CoramBAAF](#)

---

---

---

---

---

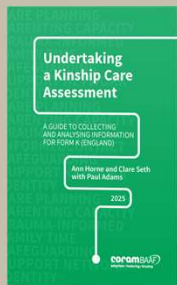
---

---

---

## Relevant CoramBAAF books

To order visit [www.corambaaf.org.uk/books](http://www.corambaaf.org.uk/books)



### Undertaking a kinship care assessment

£18.95 | 2025  
ISBN 978 1 913384 36 4

---

---

---

---

---

---

---

---

## Relevant CoramBAAF books

To order visit [www.corambaaf.org.uk/books](http://www.corambaaf.org.uk/books)



Making good assessments  
£20 | 2020  
ISBN 978 1 910039 17 5



Kinship care and special guardianship:  
what it is and what it means  
£4.95 | 2024  
ISBN 978 1 913384 29 6



Undertaking checks and references  
in fostering and adoption  
£21.95 | 2024  
ISBN 978 1 910039 85 4

---

---

---

---

---

---

---

---





### Evaluation and certificate

To fill in our evaluation form scan the QR code or visit the link below:

Once you have completed your evaluation form you will receive your certificate.

---

---

---

---

---

---

---

## Thank you from CoramBAAF



We hope to see you again soon!



@CoramBAAF



@CoramBAAF



@CoramBAAF



@Adoptionfostering

---

---

---

---

---

---

---